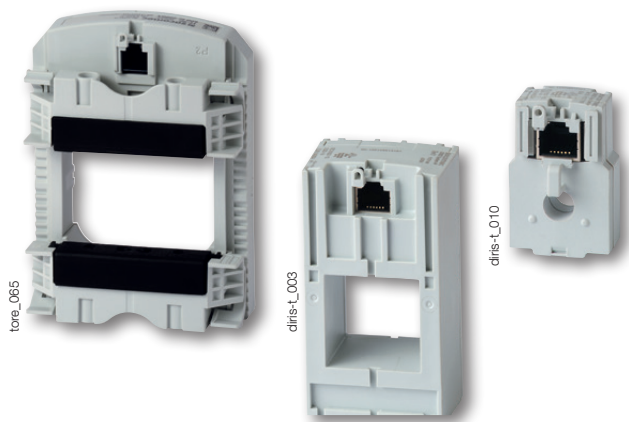


TE *sensors*

Solid-core current sensors

used with DIRIS Digiware, DIRIS A-40 and DIRIS B



TE solid-core sensors

The solution for

- > Data centres
- > Healthcare
- > Buildings



Strong points

- > Plug & Play
- > Accuracy according to IEC 61557-12
- > Installation

Conformity to standards

- > IEC 61557-12



- > ISO 14025



- > UL



Create your project

- > Find the best DIRIS Digiware configuration:
www.meter-selector.com



Function

TE smart **current sensors** measure the load currents of an electrical system and send the data to meters and PMDs via an RJ12 plug-and-play output. Thanks to a wide measurement range, TE current sensors cover the full current range of 5 to 2000 A, with 7 references. TE solid-core current sensors can be connected to DIRIS Digiware, DIRIS A-40 and DIRIS B via a quick RJ12 connection.

Numerous accessories are available to aid the installation of sensors in any type of cabinet.

Advantages

Plug & Play

- A quick RJ12 connection makes wiring easy and reliable and prevents wiring errors. This also allows automatic detection of the sensor type and rating/transformation ratio.
- The sensors can be installed in both orientations.

Installation

- The TE solid-core sensor range is specially designed for new installations, and has the same pitch as the most common protection devices.

Accuracy according to IEC 61557-12

- Class 0.5 for the overall measurement chain (PMD + TE current sensors) from 2 to 120% of nominal current I_n .

General characteristics

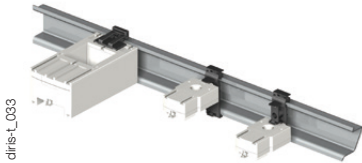
- Range 5 to 2000 A.
- Used with DIRIS Digiware, DIRIS A-40 and DIRIS B.

Mounting

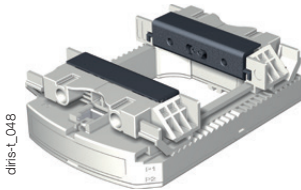
Linear assembly with the circuit breakers
 TE-25 / TE-35 / TE-45 / TE-55 / TE-90



DIN-rail mounted



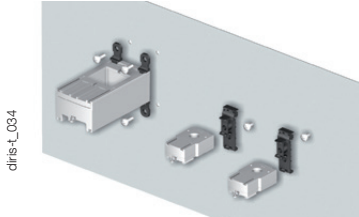
TE-90 clamps



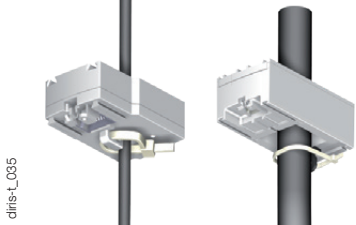
Staggered assembly
 TE-18 / TE-35 / TE-45 / TE-55



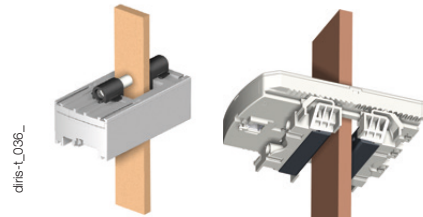
Back-plate mounting



Cable mounting

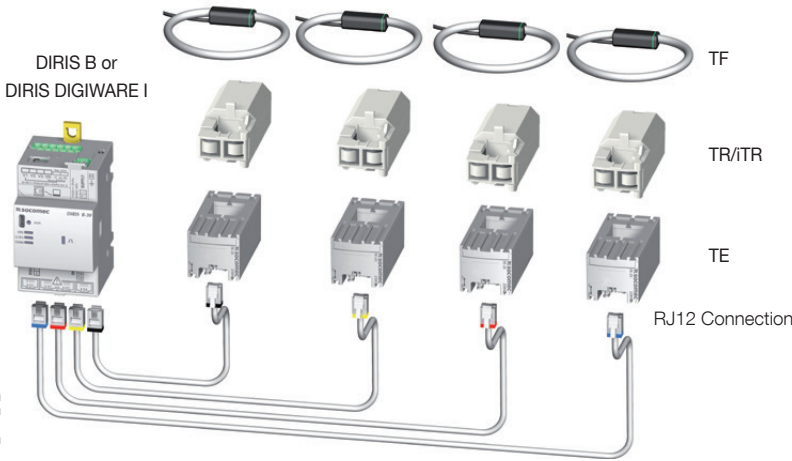


Bar mounting




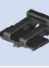


Connections

TE / TR / ITR / TF current sensors



Mounting accessories

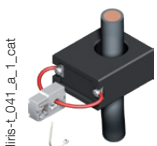
Mounting accessories delivered with TE sensors.

Mounting accessory	TE-18	TE-25	TE-35 TE-45 TE-55	TE-90
 DIN rail and backplate	1 pc			2 pcs
 DIN rail		2 pcs	2 pcs	
 Back-plate		4 pcs	4 pcs	6 pcs
 Busbar			2 pcs	

diris-t_042_a - 043_a - 044_a - 045_a

Compatible accessories

Adaptor for CT with 5A secondary

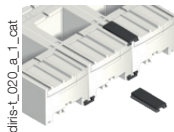


diris-t_041_a_1_cat

- With this adaptor you can use a current transformer with a 5 A output on the DIRIS Digiware, DIRIS B and DIRIS A-40. For use with 5 A CTs (measurement up to 10,000 A) or 1 A CTs (measurement up to 2000 A). The dimensions are the same as the TE-18.

Coupling link

- Associated with the TE range, this accessory is for inter-connecting the sensors when linear or staggered mounted.

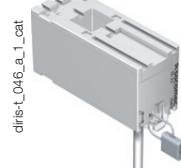


diris-t_020_a_1_cat



Sealable cover

- Using a sealable cover guarantees the immunity of the sensor connection on TE/TR/iTR/TF current sensors.

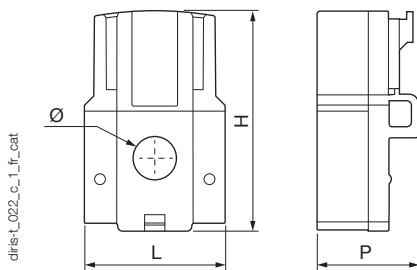


diris-t_046_a_1_cat

Dimensions (mm)

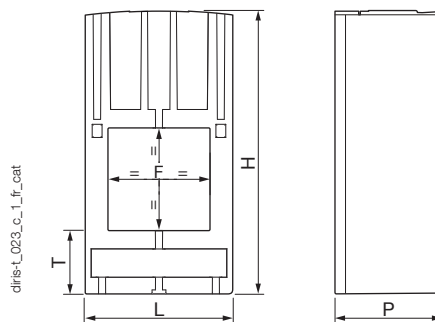
TE - Solid-core sensor

TE-18



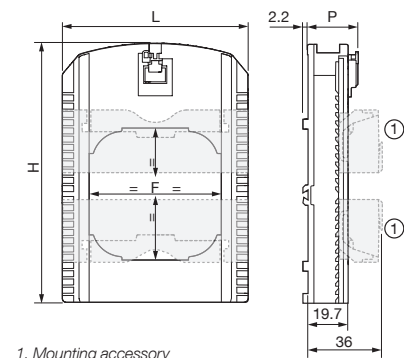
diris-t_022_c_1_fr_cat

TE-25 / TE-35 / TE-45 / TE-55



diris-t_023_c_1_fr_cat

TE-90



diris-t_047_b_1_fr_cat

1. Mounting accessory

Model	Nominal current range (A)	Real range covered (A)	Pitch (mm)	H x W x D (mm)	F (mm)	T (mm)
TE-18	5 ... 20/25 ... 63	0.1 ... 24/0.5 ... 75	18	45 x 28 x 20	8.6	-
TE-25	40 ... 160	0.8 ... 192	25	65 x 25 x 32.5	13.5 x 13.5	17.5
TE-35	63 ... 250	1.26 ... 300	35	71 x 35 x 32.5	21 x 21	17.5
TE-45	160 ... 630	3.2 ... 756	45	86 x 45 x 32.5	31 x 31	19.5
TE-55	400 ... 1000	8 ... 1200	55	100 x 55 x 32.5	41 x 41	21.5
TE-90	600 ... 2000	12 ... 2400	90	126 x 90 x 24.6	64 x 64	-

Technical characteristics

TE - Solid-core sensor								
Model	TE-18	TE-18	TE-25	TE-35	TE-45	TE-55	TE-90	
Nominal current range I_n (A)	5 ... 20	25 ... 63	40 ... 160	63 ... 250	160 ... 630	400 ... 1000	600 ... 2000	
Real range covered (A)	0.1 ... 24	0.5 ... 75	0.8 ... 192	1.26 ... 300	3.2 ... 756	8 ... 1200	12 ... 2400	
Max. current (A)	24	75.6	192	300	756	1200	2400	
Weight (g)	24	24	69	89	140	187	163	
Max. voltage (V)	300 V P/N bare cable 600 V P/N insulated cable						600 V P/N insulated cable	
Rated withstand voltage	3 kV							
Frequency	50/60 Hz							
Intermittent overload	10 x I_n for 1 sec							
Measurement category	CAT III							
Ingress Protection rating	IP30 / IK06							
Operating temperature	-10 ... +70 °C							
Storage temperature	-25 ... +85 °C							
Relative humidity	95% RH condensation-free							
Altitude	< 2000 m							
Connection	Socomec RJ12 cable							

References

Model	Nominal current range (A)	Real range covered (A)	Pitch (mm)	Reference
TE-18	5 ... 20	0.1 ... 24	18	4829 0500
TE-18	25 ... 63	0.5 ... 75	18	4829 0501
TE-25	40 ... 160	0.8 ... 192	25	4829 0502
TE-35	63 ... 250	1.26 ... 300	35	4829 0503
TE-45	160 ... 630	3.2 ... 756	45	4829 0504
TE-55	400 ... 1000	8 ... 1200	55	4829 0505
TE-90	600 ... 2000	12 ... 2400	90	4829 0506

Accessories	Reference
Coupling link (20 linear assembly parts and 10 for staggered assembly)	4829 0598
5 A CT adaptor (max primary current 2000 A /1 A or 10,000 A /5 A)	4829 0599
Sealable caps (20 pieces)	4829 0600

RJ12 connection cables	Cable length (m)										
	0.1	0.2	0.3	0.5	1	2	3	5	7	10	50 m reel + 100 connectors
Number of cables	Reference	Reference	Reference	Reference	Reference	Reference	Reference	Reference	Reference	Reference	Reference
1	-	-	-	-	4829 0611	4829 0612	4829 0613	4829 0602	-	4829 0603	4829 0601
3	4829 0580	4829 0581	4829 0582	4829 0595	4829 0583	4829 0584	4829 0606	4829 0607	4829 0608	4829 0609	-
4	-	-	-	4829 0596	4829 0588	4829 0589	-	-	-	-	-
6	4829 0590	4829 0591	4829 0592	4829 0597	4829 0593	4829 0594	-	-	-	-	-