

Enclosed switches

Fuse combination switches

32 to 800 A



*FUSERBLOC enclosure 32 to 63A
Painted steel - IP65*



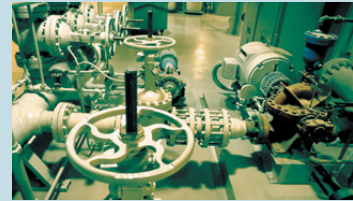
*FUSERBLOC enclosure 50 to 160A
Polyester - IP55*



*FUSERBLOC enclosure 100 to 800A
Painted steel - IP65*

The solution for

- > OEM
- > Industries
- > Commercial buildings
- > Electrical distribution



Strong points

- > Safe operation
- > Suitable for all kinds of environment
- > Easy setup
- > Extensive range

Compliance with standards

- > IEC 60947-3
- > IEC 60364
- > EN 60947-3
- > EN 61439
- > EN 60204-1



Other products

- > Customised solutions available on request.

Function

Enclosed fuse combination load break switches ensure on-load breaking and making of circuits, protect against overcurrents, and safely isolate all low-voltage electrical circuits by providing protection against contact with live parts and environmental elements, such as dust, water and other hazards.

They enable the shutdown and isolation of the power supply as close to the equipment as possible.

Advantages

Safe operation

- Reliable lockout for safe maintenance procedures.
- On-load breaking.
- Ergonomic operating handle, available in red/yellow or black.
- Triple lock in OFF position.

Suitable for all kinds of environment

- Insulated enclosure for chemical and food processing applications, indoor or outdoor installation.
- Painted steel for areas at risk of impact.

Easy setup

- Cable access top and/or bottom.
- Cable gland knockouts (≤ 100 A).
- Removable gland plates at top and bottom for steel enclosures ≥ 160 A.
- Plenty of room for cabling.

Extensive range

- Standard range.
- Customised products on request.

Fuse combination load break switch in insulated enclosure

■ **FUSERBLOC** in polyester enclosure



coff_b84_front.psd

General characteristics

- From 50 to 160 A.
- 3 poles, 4 poles.
- DIN fuse protection (for BS, please contact us).
- Black handle (red/yellow on request).
- Triple lock in OFF position.
- Polyester enclosure.
- Screw-on front.
- Colour: RAL 7035.
- Degree of protection: IP55.
- Wall-mounted, 4 brackets included.

Accessories

- Aux contact open (NO) or closed (NC).
- Blown fuse NO/NC auxiliary contact.
- Terminal shroud.

References

Rating (A)	Case	No. of poles	With black handle	Fuse size (NF, NH)	Auxiliary contacts	Terminal shroud	Blown fuse NO/NC auxiliary contact	Enclosure	
								Size	H x W x D (mm)
50	11	3 P	3117 3005	14 x 51	1 NO AC 3999 0701	-	3994 0405	CP 22	270 X 270 X 171
		4 P	3117 4005						
100	13	3 P	3117 3010	22 x 58	1 NC AC 3999 0702	3998 3016	3994 0310	CP 32	360 X 270 X 171
		4 P	3117 4010			3998 4016	3994 0410		
160	14	3 P	3117 3016	0		3998 3016	3994 0316	CP 52	540 X 270 X 171
		4 P	3117 4016			3998 4016	3994 0416	CP 53	540 X 360 X 171

■ **FUSERBLOC** in metallic enclosure



coff_606_front.psd

General characteristics

- From 32 to 800 A.
- 3 poles + solid neutral, 4 poles.
- DIN fuse protection (for BS, please contact us).
- Black handle (red/yellow on request).
- Triple lock in OFF position.
- Painted steel enclosure.
- Hinged door with double bar locking.
- Colour: RAL 7035.

- Cable gland knockouts (≤ 63 A) or removable gland plates (≥ 100 A) at top and bottom.
- Degree of protection: IP65.
- Wall mounting brackets included (not available for 32 and 63 A).

Accessories

- Aux contact open (NO) or closed (NC).
- Blown fuse NO/NC auxiliary contact.
- Terminal shrouds.

References

Rating (A)	Case	No. of poles	With black handle	Fuse size (NF, NH)	Auxiliary contacts	Terminal shroud	Blown fuse NO/NC auxiliary contact	Bracket kit	Enclosure		
									Size	H x W x D (mm)	Cable-in top and bottom (mm)
32	0	3 P + N	3035 5003	14 x 51		-	-	3031 0011	CT 32a	300 x 250 x 150	$\varnothing 32 + 2 \times \varnothing 50 + \varnothing 16$
		4 P	3035 4003								
63	12	3 P + N	3035 5006	00C		-	-		CT 33	300 x 300 x 150	4 x $\varnothing 32 + \varnothing 16$
		4 P	3035 4006								
100	13	3 P + N	3035 5010	22 x 58		3998 3016	3994 0410		CT 43	400 x 300 x 210	180 x 100
		4 P	3035 4010								
160	13	3 P + N	3035 5016	00	1 NO AC 3999 0701	3998 3016	3899 3380		CT 44	400 x 400 x 210	280 x 100
		4 P	3035 4016								
250	15	3 P + N	3035 5025	1	1 NC AC 3999 0702	3998 3025	3994 0425	included	CT 64	600 x 400 x 250	280 x 100
		4 P	3035 4025								
400	16	3 P + N	3035 5040	2		3898 3040	3994 0440		CT 66	600 x 600 x 300	380 x 100
		4 P	3035 4040								
630	17	3 P + N	3035 5063	3		3898 3080	3994 1406		CT 108	1000 x 800 x 400	660 x 100
		4 P	3035 4063								
800	18	3 P + N	3035 5080	4		3898 3120	3994 1412				
		4 P	3035 4080								

Enclosed switches

Fuse combination switches

32 to 800 A

Characteristics

Electrical features according to IEC 60947-3

		FUSERBLOC									
Thermal current I_{th} (40 °C)		CD 32 A	50 A	63 A	100 A	160 A	160 A	250 A	400 A	630 A	800 A
NFC/DIN fuse size		14 x 51	14 x 51	00C	22 x 58	00	0	1	2	3	4
Switch body size for front and side operation		0	11	12	13	13	14	15	16	17	18
Enclosed thermal current I_{th} (35°C) (A)		32	50	57	100	160	160	240	400	630	800
Enclosed thermal current I_{th} (50°C) (A)		29	48	52	86	138	138	207	345	544	691
Rated insulation voltage U_i (V)		800	800	800	800	800	800	800	1000	1000	1000
Rated impulse withstand voltage U_{imp} (kV)		8	8	8	8	8	8	8	12	12	12
Rated operational currents I_e (A)											
Rated voltage	Utilisation category	A/B ⁽¹⁾	A/B ⁽¹⁾	A/B ⁽¹⁾	A/B ⁽¹⁾	A/B ⁽¹⁾	A/B ⁽¹⁾	A/B ⁽¹⁾	A/B ⁽¹⁾	A/B ⁽¹⁾	A/B ⁽¹⁾
400 VAC	AC-22 A / AC-22 B	32/32	50/50	63/63	100/100	160/160	160/160	250/250	400/400	630/630	800/800
400 VAC	AC-23 A / AC-23 B	32/32	50/50	63/63	100/100	160/160	160/160	250/250	400/400	630/630	800/800
690 VAC	AC-22 A / AC-22 B	32/32	50/50	63/63	100 ⁽²⁾ /100 ⁽²⁾	160 ⁽²⁾ /160 ⁽²⁾	160 ⁽²⁾ /160 ⁽²⁾	250 ⁽²⁾ /250 ⁽²⁾	400/400	500/630	800/800
690 VAC	AC-23 A / AC-23 B	32/32	50/50	63/63	100 ⁽²⁾ /100 ⁽²⁾	125 ⁽²⁾ /125 ⁽²⁾	125 ⁽²⁾ /125 ⁽²⁾	250 ⁽²⁾ /250 ⁽²⁾	315/400	315/400	800/800
Operational power in AC-23 (kW)											
At 400 VAC without pre-break in AC ⁽¹⁾⁽³⁾		15/15	25/25	30/30	51/51	80/80	80/80	132/132	220/220	355/355	450/450
At 690 VAC without pre-break in AC ⁽¹⁾⁽³⁾		25/25	45/45	55/55	90/90	110/110	110/110	220/220	220/295	295/400	400/400
Reactive power (kvar)											
At 400 VAC ⁽³⁾		15	23	28	45	75	75	115	185	290	355
gG DIN fuse protected short-circuit withstand current											
Prospective short-circuit current (kA rms) ⁽⁴⁾		100	100	100	100	50	100	100	100	100	100
Associated fuse rating (A) ⁽⁴⁾		32	50	63	100	160	160	250	400	630	800
Short-circuit operation (switch only)											
Rated peak withstand current (kA peak) ⁽⁴⁾		5.5	7.6	10.6	20	20	22.7	32.5	40	70	80
Connection											
Minimum Cu cable cross-section (mm ²)		2.5	6	10	25	35	50	95	185	2 x 150	-
Maximum Cu cable cross-section (mm ²)		16	25	25	95	95	95	240	240	2 x 300	4 x 185

(1) Category with index A = frequent operation / Category with index B = infrequent operation.

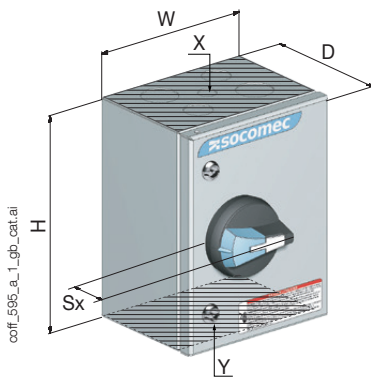
(2) With terminal shrouds or phase barrier.

(3) The power value is given for information only; the current values vary from one manufacturer to another.

(4) For a rated operational voltage $U_e = 400$ VAC

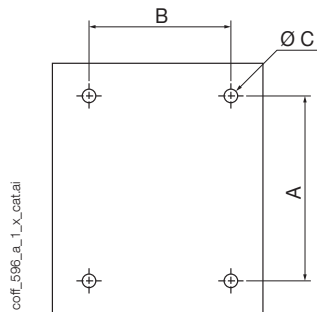
Dimensions

Enclosures



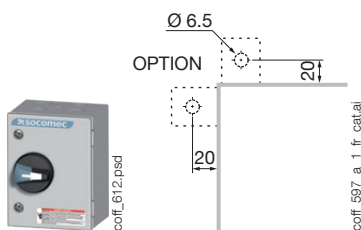
conf_595_a_1_gb_catal

Size	Type	H x W x D (mm)	Sx (mm)	A (mm)	B (mm)	Ø C (mm)	X - Y Cable-in top and bottom ⁽¹⁾
CP 22	3	270 x 270 x 171	45	247	247	6.5	-
CP 32		360 x 270 x 171		337	247		
CP 52		540 x 270 x 171		516	247		
CP 53		540 x 360 x 171		516	337		
CT 32a	1	300 x 250 x 150		262	212	12.5	Ø 32 + 2 x Ø 50 + Ø 16
CT 33		300 x 300 x 150		262	262		4 x Ø 32 + Ø 16
CT 43	2	400 x 300 x 210		362	262		180 x 100
CT 44		400 x 400 x 210		362	362		280 x 100
CT 64		600 x 400 x 250		562	362	380 x 100	
CT 66		600 x 600 x 300		562	562	380 x 100	
CT 108		1000 x 800 x 400	962	762	660 x 100		



conf_596_a_1_x_catal

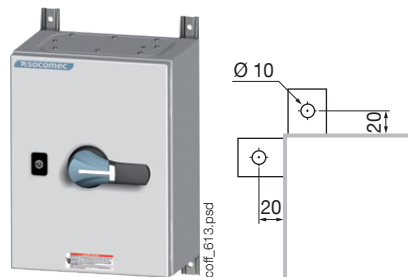
Type 1



conf_612.psd

conf_597_a_1_fr_catal

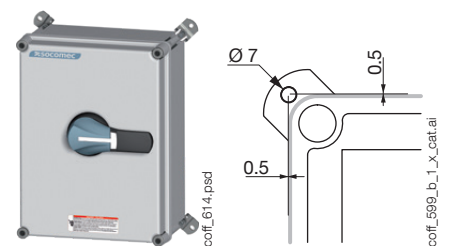
Type 2



conf_613.psd

conf_598_a_1_x_catal

Type 3



conf_614.psd

conf_599_b_1_x_catal