



# AC analogue voltmeters

## Indicators and transducers

Indicators and transducers



voltm\_014.eps

### Compliance with standards

- > IEC 60051-1
- > IEC 60414
- > NF EN 60051-1
- > DIN 43780
- > NF C 42-010
- > VDE 0410
- > BS 5448
- > BS 89



### Function

SOCOME **ferromagnetic voltmeters** measure the AC voltage of any electrical circuit. They are embedded in the front panel of cabinets, enclosures or other equipment.

### Characteristics

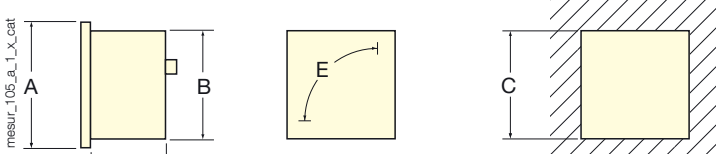
- Pointer deflection: 90°.
- Insulating voltage: 660 V.
- Dielectric quality: 2 kV - 50 Hz - 1 mn.
- Consumption: 3 VA.
- Operating frequency: 45/65 Hz.
- Connection: screw or fast-on lugs.

### Composition of the range

	Case	DIN 48-72-96	ROTEX 72-96
	Pointer deflection	90°	90°
	Connection	direct	direct
<b>Rating</b>			
0 - 150 V		•	•
0 - 250 V		•	•
0 - 300 V		•	•
0 - 500 V		•	•
0 - 600 V		•	•

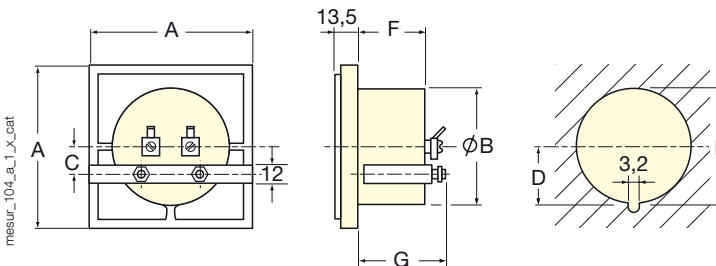
## Case

### DIN



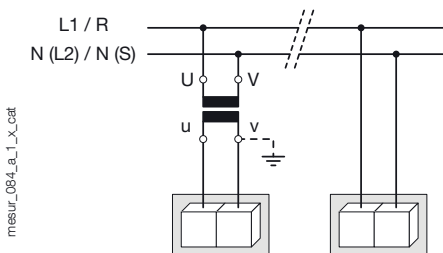
Pointer deflection: 90°				
A	B	C	D	E
48 x 48	44.5 x 44.5	45 <sup>+0.6</sup>	59	38
72 x 72	66.5 x 66.5	68 <sup>-0.7</sup>	58	65
96 x 96	89 x 89	92 <sup>-0.8</sup>	58	100

### ROTEX



Pointer deflection: 90°						
A	B	C	D	E	F	G
72 x 72	54.5	11	28.5	56 <sup>±0.5</sup>	34.5	50.8
96 x 96	68	21.6	35.5	70 <sup>±0.5</sup>	34.5	50.8

## Connections



## References

Normal indication with 90° pointer deflection

Rating	Direct connection				
	DIN 48x48 D48A90-V	DIN 72x72 D72A90-V	DIN 96x96 D96A90-V	ROTEX 72x72 R72A90-V	ROTEX 96x96 R96A90-V
0 - 150 V	Reference 192G 1003	Reference	Reference	Reference	Reference
0 - 250 V	Reference 192G 1004	Reference 192G 1104	Reference 192G 1204	Reference 192G 2104	Reference
0 - 300 V	Reference	Reference 192G 1105	Reference	Reference 192G 2105	Reference
0 - 500 V	Reference 192G 1007	Reference 192G 1107	Reference 192G 1207	Reference 192G 2107	Reference 192G 2207
0 - 600 V	Reference	Reference	Reference 192G 1208	Reference	Reference